

## what is the Access to Work Grant Scheme?

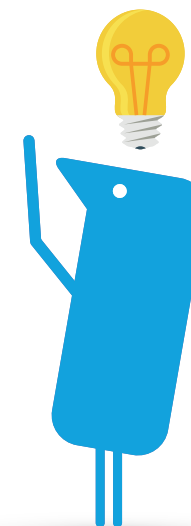
Access to Work is a government-funded grant scheme to help people with disabilities - and those with a physical or mental health condition - to start or stay in work.

The grant can help businesses pay for specialist software, adapted equipment, a support worker or travel expenses to and from work depending on the needs of the employee.

## how can the Access to Work Grant Scheme help me?

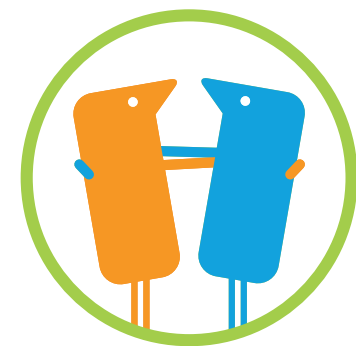
Access to Work can help pay for support you may need because of a disability or long term health condition, for example:

- ✓ Aid, software and equipment in your workplace
- ✓ Adapting equipment to make it easier for you to use
- ✓ Money towards any extra travel costs to and from work if you can't use available public transport, or if you need help to adapt your vehicle
- ✓ An interpreter or other support at a job interview if you have difficulty communicating
- ✓ Other practical help at work, such as a job coach or a note taker or lip speaker



## if you have dyslexia, examples of the support offered may include:

- ✓ Assistive technology software, such as Read&Write
- ✓ Accredited training on the assistive technology
- ✓ Specialist equipment, such as coloured overlays
- ✓ Dyslexia coping strategies training



## am I eligible?

### You can apply for Access to Work if you:

- ✓ Are normally resident in, and working in, Great Britain
- ✓ Have a disability or long term health condition that means you need an aid, adaptation or financial or human support to do your job (long term means lasting or likely to last for at least 12 months)
- ✓ Have a mental health condition and need support in work
- ✓ Are aged 16 or over

### You must also:

- ✓ Already be doing paid work
- ✓ Be about to start work or become self-employed
- ✓ Have an interview for a job
- ✓ Be about to begin a work trial or start work experience under the Youth Contract arranged through Jobcentre Plus



## about your condition

To receive support from Access to Work, your disability or health condition must affect your ability to do a job.

The grant can help pay for **specialist software - such as Read&Write** software, adapted equipment, a support worker or travel expenses to and from work depending on your individual needs.

[Learn more about the Access to Work scheme](#)

